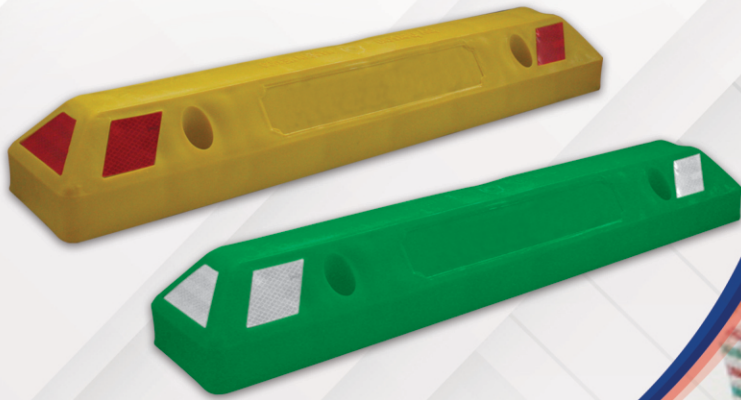


- New environmentally friendly formulation.



- Customizable product under minimum order.



TECHNICAL USE:

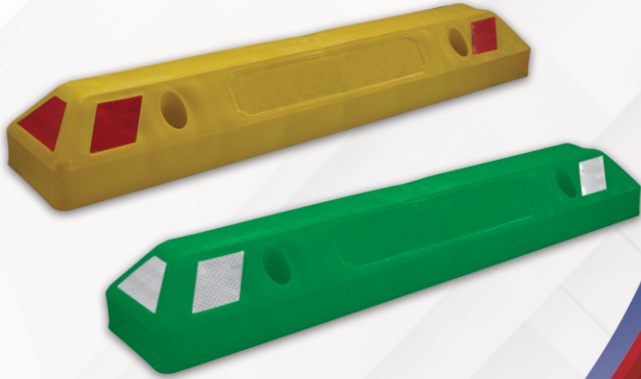
- To Divide exclusive lanes.
- To mark bicycle lanes.
- To stop vehicles in parking lots.

"The colors shown are illustrative and maybe present variations in the products tones without affecting their performance."



"For your investment and safety our products are protected by certificates and international patent registrations."

FEATURES:



- Customizable product under minimum order.

MATERIAL: HIGH DENSITY POLYETHYLENE
PROTECTION: UV STABILIZER
COLOR: YELLOW, GREEN

PHYSICAL PROPERTIES OF THE HIGH DENSITY POLYETHYLENE THAT WE USE

DENSITY: 950 a 957 kg/m³
WEIGHT RESISTANCE: 16,000 lbf(+/- 2000)
SINGLE COMPRESSION: +/- 50% DEFORMATION WITHOUT FRACTURE
EXPANSION OR ELASTICITY COMPRESSION: 30 to 35 mm ELONGATION
APPLICATION FORCE TO COMPRESSION: 54 KG FORCE (+/- .5)
RECOVERY: +/- 30% UNDER 9 TONS (20,000 lbf)

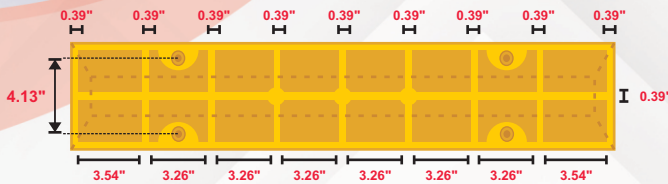
DIMENSIONS AND PIECES PER PACKAGING:

NUMBER OF PIECES: 6 PCS
DIMENSION: 2.87 x 1.73 x 0.59 IN
WEIGHT: 58.21 LBS

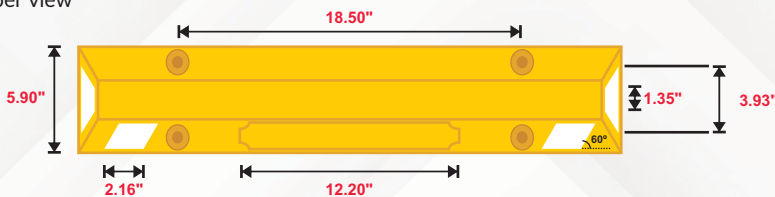
MEASUREMENTS:

Bottom view

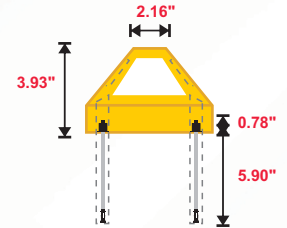
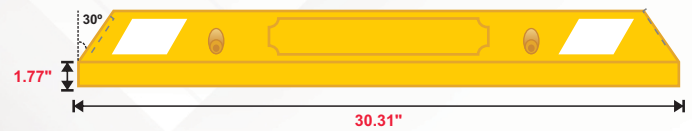
Exclusive design at the base of the RPM based on dynamic tensors that distribute the energy that impacts it.



Upper view

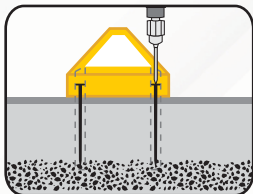


Side view



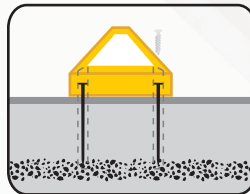
INSTALLATION:

Step 1: PERFORATION



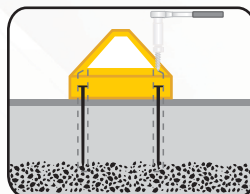
Place the unit at desired position and drill with a 1/2 X 10" drill bit to about 4" deep on the holes of the traffic divider the current traffic orientation.

Step 2: INSERT EXPANSIVE BOLTS AND PLACE THE TRAFFIC DIVIDER



With holes already made, insert the expansive bolt, leaving free 0.8" of the screw for the nut insertion. Let the piece holes coincide with the perforations on the pavement.

Step 3: NUT INSERTION



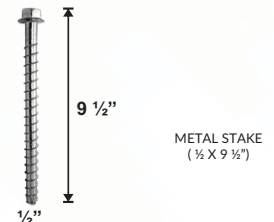
Insert the nut using a 3/4" socket with a 1/2" torque wrench to tighten firmly the nut in the expansive bolt from 40 to 45 lbs.

FASTENING:

CONCRETE pavement



ASPHALT pavement



TYPES OF PAVEMENTS:

ON CONCRETE PAVEMENT: 1/2 X 5 1/2" expansive bolts.

ON ASPHALT PAVEMENT: 1/2 X 9 1/2" metal stakes.

Important notice: Depending on the hardness of the asphalt, metal stakes can be hammered without previous perforations.

MADE OF NONCONTAMINANT AND RECYCLABLE MATERIALS